

Figure S1. Representative images of the different intensity scores for Cyto C in clear renal cell carcinoma. Scale bars, 50 μ m. Cyto C, cytochrome C.

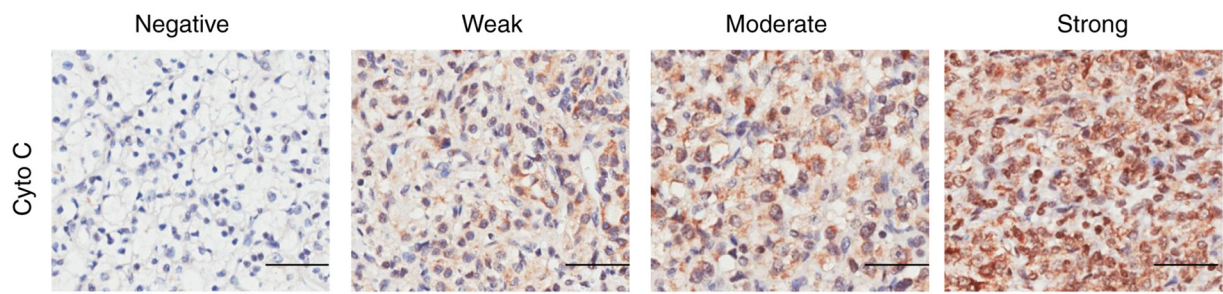


Figure S2. Western blotting results for the protein expression levels of COXIV in siNC, siCyto C, mock and OECyto C transfected cells. COXIV, cytochrome c oxidase subunit 4I1; si, small interfering; NC, negative control; Cyto C, cytochrome C; OE, overexpression.

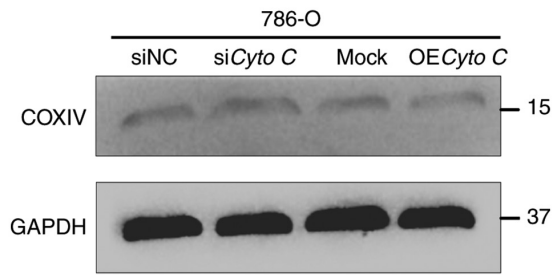


Table SI. Clinical features of the renal cell carcinoma specimens in the tissue microarray used in the present study.

Feature	World Health Organization grade		
	I, n (n=62)	II, n (n=69)	III, n (n=19)
Sex			
Male	56	43	8
Female	6	26	11
Age at diagnosis, years			
<50	16	17	4
≥50	46	52	15
Location			
Left kidney	26	34	8
Right kidney	36	35	11
TNM stage			
I	56	56	10
II	6	6	4
III	0	7	5